



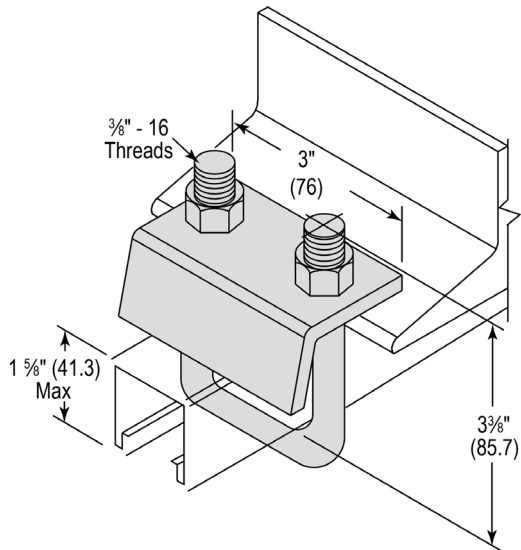
U-BOLT BEAM CLAMP FOR STRUT

ELECTRO-GALVANIZED

U-Bolt Beam Clamps are designed to attached strut channel to the bottom flange of a beam. They are made from 1/4" Thick plate and 3/8" Diameter U-Bolt and are electro-galvanized finish.



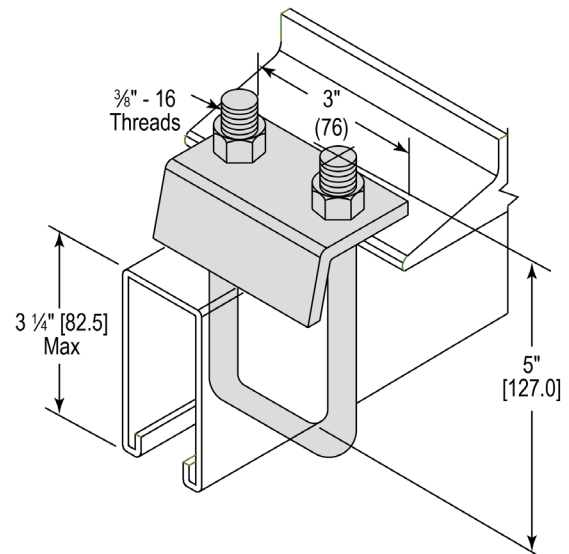
TECHNICAL INFORMATION



Part# 6UBC158

- For 13/16" & 1-5/8" Strut Channel
- For Use With Flanges Up to 3/4" (19.1) Thick
- Design Load 1,200 lbs. (5.34 kN) When Installed As Intended
- To Be Used In Pairs Only

Material is 1-5/8" (41.3) wide x 1/4" (6.3) thick unless specified. Holes are 9/16" (14.3) diameter, 13/16" (20.6) center to edge on 1-7/8" (47.6) centers unless specified.



Part# 6UBC314

- For 2-7/16" & 3-1/4" Strut Channel
- For Use With Flanges Up to 3/4" (19.1) Thick
- Design Load 1,200 lbs. (5.34 kN) When Installed As Intended
- To Be Used In Pairs Only

MATERIAL SPECIFICATIONS

Carbon Steel – ASTMA1011-00 SS GR 33 or ASTM A1011-00CS Type B

Electro-Galvanized – Electroplating deposits zinc on the surface of the steel by electrolysis from a bath of zinc salts. Recommended for relatively dry indoor use. This is the standard coating for most Phoenix products. Thickness of applied zinc is between 0.2 mils to 0.5 mils [5.1 μm to 12.7 μm]. Coatings on Phoenix EG products meet ASTM B633 SC1 Type III.

ORDERING INFORMATION

Part No.	Item	Strut Depth	Flange Size	Coating
6UBC158	U-Bolt Beam Clamp for Strut	13/16" & 1-5/8"	Up to 3/4" Thick	Electro-Galvanized
6UBC314	U-Bolt Beam Clamp for Strut	3-1/4" & Double Back	Up to 3/4" Thick	Electro-Galvanized